

Do not scale the drawing. Check for a number of  
 dimensions. Fully understand the meaning of any  
 abbreviations.  
 Drawing No. 14.03.08 Planning No.

- Legend**  
 (Indicates dimensions shown with landscaping  
 details in the figures)
- A. Materials: Tarmac block paving, grass, 3.0m  
 kerbs, concrete, brickwork, brickwork  
 kerbs, concrete, brickwork, brickwork  
 kerbs, concrete, brickwork, brickwork  
 kerbs, concrete, brickwork, brickwork  
 kerbs, concrete, brickwork, brickwork
  - B. Materials: Tarmac block paving, grass, 3.0m  
 kerbs, concrete, brickwork, brickwork  
 kerbs, concrete, brickwork, brickwork  
 kerbs, concrete, brickwork, brickwork  
 kerbs, concrete, brickwork, brickwork
  - C. Materials: Tarmac block paving, grass, 3.0m  
 kerbs, concrete, brickwork, brickwork  
 kerbs, concrete, brickwork, brickwork  
 kerbs, concrete, brickwork, brickwork  
 kerbs, concrete, brickwork, brickwork
  - D. Materials: Tarmac block paving, grass, 3.0m  
 kerbs, concrete, brickwork, brickwork  
 kerbs, concrete, brickwork, brickwork  
 kerbs, concrete, brickwork, brickwork  
 kerbs, concrete, brickwork, brickwork
  - E. Materials: Tarmac block paving, grass, 3.0m  
 kerbs, concrete, brickwork, brickwork  
 kerbs, concrete, brickwork, brickwork  
 kerbs, concrete, brickwork, brickwork  
 kerbs, concrete, brickwork, brickwork
  - F. Materials: Tarmac block paving, grass, 3.0m  
 kerbs, concrete, brickwork, brickwork  
 kerbs, concrete, brickwork, brickwork  
 kerbs, concrete, brickwork, brickwork  
 kerbs, concrete, brickwork, brickwork
  - G. Materials: Tarmac block paving, grass, 3.0m  
 kerbs, concrete, brickwork, brickwork  
 kerbs, concrete, brickwork, brickwork  
 kerbs, concrete, brickwork, brickwork  
 kerbs, concrete, brickwork, brickwork
  - H. Materials: Tarmac block paving, grass, 3.0m  
 kerbs, concrete, brickwork, brickwork  
 kerbs, concrete, brickwork, brickwork  
 kerbs, concrete, brickwork, brickwork  
 kerbs, concrete, brickwork, brickwork
  - I. Materials: Tarmac block paving, grass, 3.0m  
 kerbs, concrete, brickwork, brickwork  
 kerbs, concrete, brickwork, brickwork  
 kerbs, concrete, brickwork, brickwork  
 kerbs, concrete, brickwork, brickwork
  - J. Materials: Tarmac block paving, grass, 3.0m  
 kerbs, concrete, brickwork, brickwork  
 kerbs, concrete, brickwork, brickwork  
 kerbs, concrete, brickwork, brickwork  
 kerbs, concrete, brickwork, brickwork
  - K. Materials: Tarmac block paving, grass, 3.0m  
 kerbs, concrete, brickwork, brickwork  
 kerbs, concrete, brickwork, brickwork  
 kerbs, concrete, brickwork, brickwork  
 kerbs, concrete, brickwork, brickwork
  - L. Materials: Tarmac block paving, grass, 3.0m  
 kerbs, concrete, brickwork, brickwork  
 kerbs, concrete, brickwork, brickwork  
 kerbs, concrete, brickwork, brickwork  
 kerbs, concrete, brickwork, brickwork
  - M. Materials: Tarmac block paving, grass, 3.0m  
 kerbs, concrete, brickwork, brickwork  
 kerbs, concrete, brickwork, brickwork  
 kerbs, concrete, brickwork, brickwork  
 kerbs, concrete, brickwork, brickwork
  - N. Materials: Tarmac block paving, grass, 3.0m  
 kerbs, concrete, brickwork, brickwork  
 kerbs, concrete, brickwork, brickwork  
 kerbs, concrete, brickwork, brickwork  
 kerbs, concrete, brickwork, brickwork
  - O. Materials: Tarmac block paving, grass, 3.0m  
 kerbs, concrete, brickwork, brickwork  
 kerbs, concrete, brickwork, brickwork  
 kerbs, concrete, brickwork, brickwork  
 kerbs, concrete, brickwork, brickwork
  - P. Materials: Tarmac block paving, grass, 3.0m  
 kerbs, concrete, brickwork, brickwork  
 kerbs, concrete, brickwork, brickwork  
 kerbs, concrete, brickwork, brickwork  
 kerbs, concrete, brickwork, brickwork
  - Q. Materials: Tarmac block paving, grass, 3.0m  
 kerbs, concrete, brickwork, brickwork  
 kerbs, concrete, brickwork, brickwork  
 kerbs, concrete, brickwork, brickwork  
 kerbs, concrete, brickwork, brickwork
  - R. Materials: Tarmac block paving, grass, 3.0m  
 kerbs, concrete, brickwork, brickwork  
 kerbs, concrete, brickwork, brickwork  
 kerbs, concrete, brickwork, brickwork  
 kerbs, concrete, brickwork, brickwork
  - S. Materials: Tarmac block paving, grass, 3.0m  
 kerbs, concrete, brickwork, brickwork  
 kerbs, concrete, brickwork, brickwork  
 kerbs, concrete, brickwork, brickwork  
 kerbs, concrete, brickwork, brickwork
  - T. Materials: Tarmac block paving, grass, 3.0m  
 kerbs, concrete, brickwork, brickwork  
 kerbs, concrete, brickwork, brickwork  
 kerbs, concrete, brickwork, brickwork  
 kerbs, concrete, brickwork, brickwork

**Formation Architects**

The Royle Studio  
 41 Newick Road  
 London W17 7SS  
 T 020 7261 0761  
 F 020 7261 8204  
 formationarchitects.co.uk

Page: 1  
 Project: Bucklebury House  
 for: Countryside Properties  
 and Harrow in Hackney  
 Housing Association  
 Drawing No: Coloured Site Layout  
 Date: 14.03.08  
 Drawn by: [Name]  
 Checked by: [Name]  
 Scale: 1:500 @ A3  
 Drawing No: 5943-03210 Rev 00

Do not scale this drawing. Consider it a guide only. It is not to be used for construction purposes without the consent of the architect.

Project Name: **Buckfeeh House**  
 Address: **41 Wenlock Road, London N1 7SQ**  
 Date: **14.03.08**

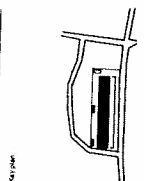
**Material Schedule**

- B1 Multi-ten
- B2 Brown engineering brick
- B3 Multi-lead work, mix of B1 and B2
- R1 White render
- R2 Fluorescent white render
- C1 Steel cladding
- BL1 Black painted steel mesh access ladders
- BL2 Black painted steel mesh access ladders
- W1 Aluminium clad timber windows
- W2 Painted glazing with grey steel panels
- W3 Stained larch glazing
- SC Stone cladding
- SC1 Stone cladding
- SC2 Stone cladding
- SC3 Stone cladding
- SC4 Stone cladding
- SC5 Stone cladding
- SC6 Stone cladding
- SC7 Stone cladding
- SC8 Stone cladding
- SC9 Stone cladding
- SC10 Stone cladding
- SC11 Stone cladding
- SC12 Stone cladding
- SC13 Stone cladding
- SC14 Stone cladding
- SC15 Stone cladding
- SC16 Stone cladding
- SC17 Stone cladding
- SC18 Stone cladding
- SC19 Stone cladding
- SC20 Stone cladding
- SC21 Stone cladding
- SC22 Stone cladding
- SC23 Stone cladding
- SC24 Stone cladding
- SC25 Stone cladding
- SC26 Stone cladding
- SC27 Stone cladding
- SC28 Stone cladding
- SC29 Stone cladding
- SC30 Stone cladding
- SC31 Stone cladding
- SC32 Stone cladding
- SC33 Stone cladding
- SC34 Stone cladding
- SC35 Stone cladding
- SC36 Stone cladding
- SC37 Stone cladding
- SC38 Stone cladding
- SC39 Stone cladding
- SC40 Stone cladding
- SC41 Stone cladding
- SC42 Stone cladding
- SC43 Stone cladding
- SC44 Stone cladding
- SC45 Stone cladding
- SC46 Stone cladding
- SC47 Stone cladding
- SC48 Stone cladding
- SC49 Stone cladding
- SC50 Stone cladding
- SC51 Stone cladding
- SC52 Stone cladding
- SC53 Stone cladding
- SC54 Stone cladding
- SC55 Stone cladding
- SC56 Stone cladding
- SC57 Stone cladding
- SC58 Stone cladding
- SC59 Stone cladding
- SC60 Stone cladding
- SC61 Stone cladding
- SC62 Stone cladding
- SC63 Stone cladding
- SC64 Stone cladding
- SC65 Stone cladding
- SC66 Stone cladding
- SC67 Stone cladding
- SC68 Stone cladding
- SC69 Stone cladding
- SC70 Stone cladding
- SC71 Stone cladding
- SC72 Stone cladding
- SC73 Stone cladding
- SC74 Stone cladding
- SC75 Stone cladding
- SC76 Stone cladding
- SC77 Stone cladding
- SC78 Stone cladding
- SC79 Stone cladding
- SC80 Stone cladding
- SC81 Stone cladding
- SC82 Stone cladding
- SC83 Stone cladding
- SC84 Stone cladding
- SC85 Stone cladding
- SC86 Stone cladding
- SC87 Stone cladding
- SC88 Stone cladding
- SC89 Stone cladding
- SC90 Stone cladding
- SC91 Stone cladding
- SC92 Stone cladding
- SC93 Stone cladding
- SC94 Stone cladding
- SC95 Stone cladding
- SC96 Stone cladding
- SC97 Stone cladding
- SC98 Stone cladding
- SC99 Stone cladding
- SC100 Stone cladding

NOTE: Some items are omitted on 1:100 drawings for the sake of clarity.

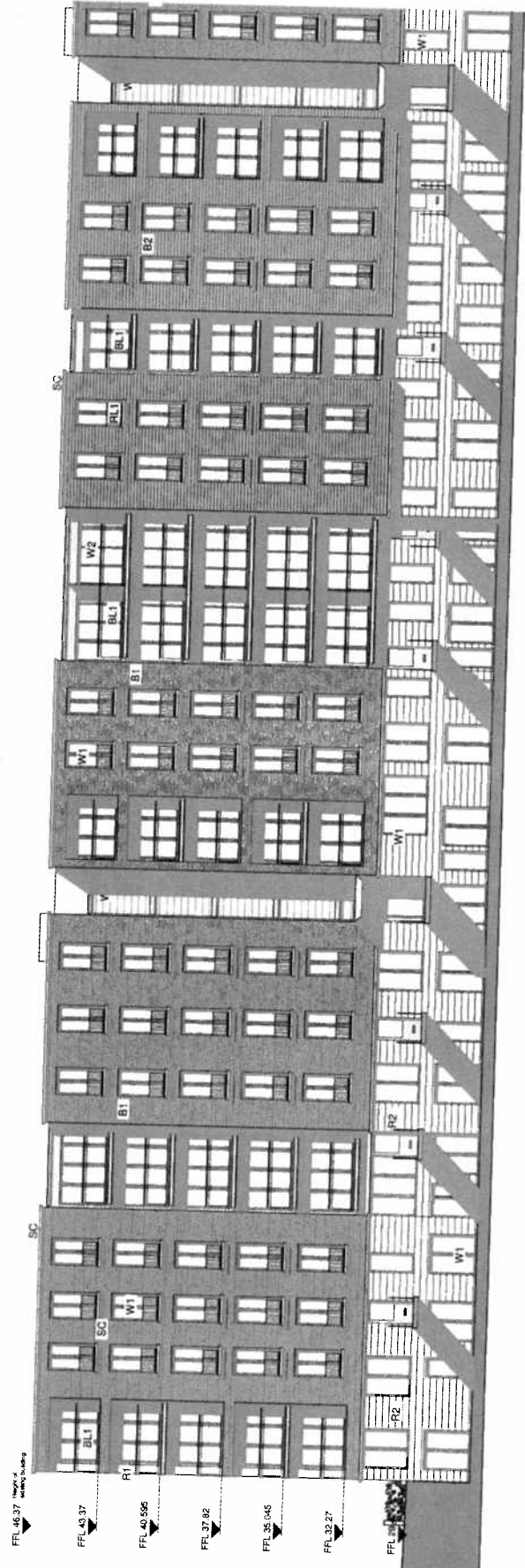
**Formative Architects**

The Royle Studio  
 41 Wenlock Road  
 London N1 7SQ  
 T 020 7251 0781  
 F 020 7251 9234  
 formativearchitects.co.uk

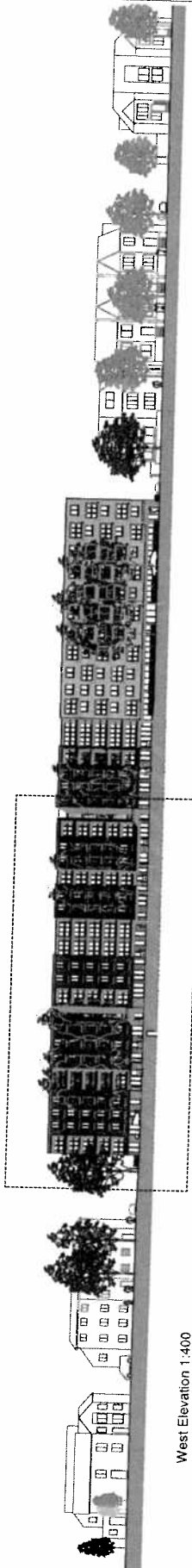


Project: **Buckfeeh House**  
 for **Countrywide Properties**  
 and **London Housing Association**

Date: **14.03.08**  
 Drawn by: **[Name]**  
 Checked by: **[Name]**  
 Title: **1:1001-406@A1**  
 Drawing No: **5943-D3501 Rev. A**



West Elevation 1:100 (North end)



West Elevation 1:400

Do not use the drawing. Complete to cover all dimensions.

Revision:

01 14.03.08 Plotting Issue

02 14.03.08 Plotting Issue

03 14.03.08 Plotting Issue

04 14.03.08 Plotting Issue

05 14.03.08 Plotting Issue

06 14.03.08 Plotting Issue

07 14.03.08 Plotting Issue

08 14.03.08 Plotting Issue

09 14.03.08 Plotting Issue

10 14.03.08 Plotting Issue

11 14.03.08 Plotting Issue

12 14.03.08 Plotting Issue

13 14.03.08 Plotting Issue

14 14.03.08 Plotting Issue

15 14.03.08 Plotting Issue

16 14.03.08 Plotting Issue

17 14.03.08 Plotting Issue

18 14.03.08 Plotting Issue

19 14.03.08 Plotting Issue

20 14.03.08 Plotting Issue

**Material Schedule**

- B1 Multi brick
- B2 Brick engineering brick
- B3 Multi brick work, mix of B1 and B2
- R1 Stone work
- C1 Painted brickwork
- C2 Stone cladding
- BL1 Glass framed balcony with grey steel section frame and stainless steel support structure with aluminium cladding
- BL2 Proprietary coloured glass screen balcony with grey steel section frame
- BL3 Proprietary coloured glass screen balcony with grey steel section frame and aluminium cladding
- SC Stone to parapet
- RL1 Black painted steel rail
- RL2 Black painted steel rail
- RL3 Black painted steel rail
- RL4 Black painted steel rail
- W1 Aluminium framed window
- W2 Painted glazing with grey steel frame
- W3 Stained glass glazing
- GC Main entrance canopy panels area

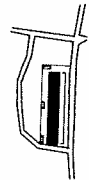
All windows and doors to be aluminium clad/UPVC clad.

NOTE: Some items are omitted on 1:100 drawings for the sake of clarity.

**Formwork Approval**

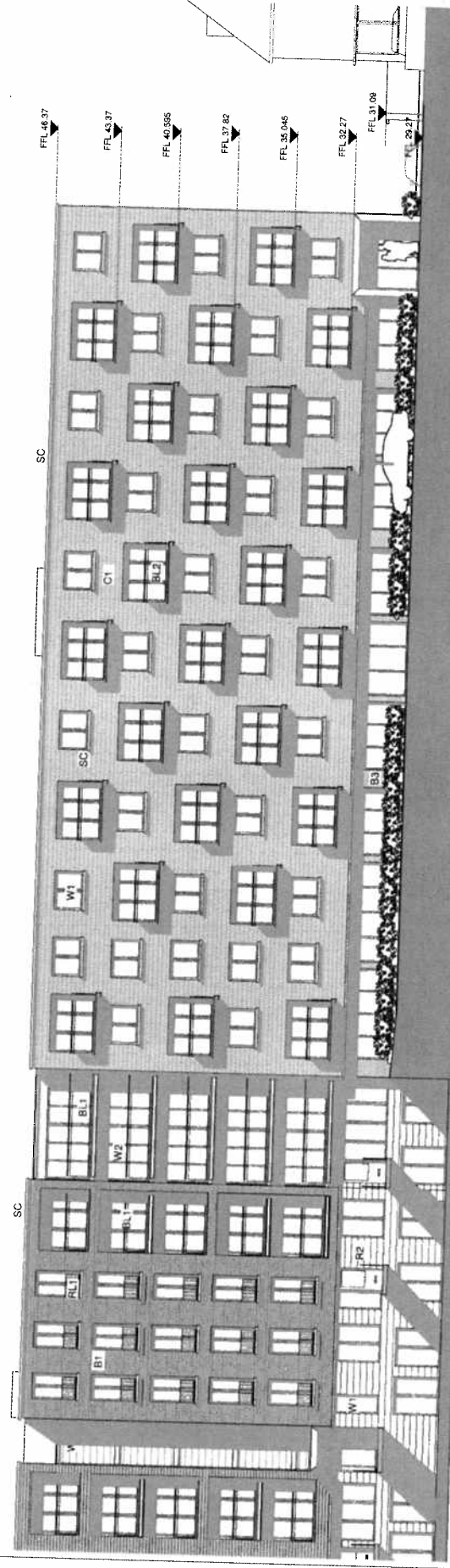
The Royal Studios  
41 Westlock Road  
London N1 7SG  
T: 020 7261 0781  
F: 020 7261 3604  
formations@rfs.co.uk

Version

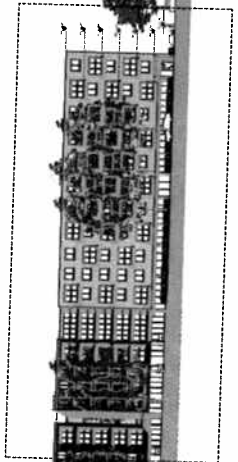


Project: Buckle House  
for  
Countrywide Properties  
and  
Harrow in Hackney  
Housing Association

Drawn by: West Elevation 02  
Proposed  
Date: 14.03.08  
Checked by:  
Name: 1:100:1:400@A1  
Drawing no: 5843-D8502 Rev. A



West Elevation 1:100 (South end)



West Elevation 1:400

Over view the drawing. Complete to scale of  
 dimensions. All dimensions are to be taken  
 from the face of the wall unless otherwise  
 indicated.  
 00.18.02.06 Drawing Issue

**Material Schedule**

- B1 Main brick
- B2 Brown engineering brick
- B3 Main brick work, inc. (B1) and B2
- B4 White render
- B5 Foundation concrete
- C1 Base cladding
- CL1 Glass covered balcony with grey steel section  
 frame and glass panels (no adjacent building) with  
 integral handrail
- BL2 Providing covered glass screen balcony with  
 grey steel section frame
- W1 Aluminium clad timber windows/doors
- W2 Powder coated grey UPVC panel
- W3 Aluminium clad timber windows/doors
- W4 Aluminium clad timber windows/doors
- W5 Aluminium clad timber windows/doors
- W6 Aluminium clad timber windows/doors
- W7 Aluminium clad timber windows/doors
- W8 Aluminium clad timber windows/doors
- W9 Aluminium clad timber windows/doors
- W10 Aluminium clad timber windows/doors
- W11 Aluminium clad timber windows/doors
- W12 Aluminium clad timber windows/doors
- W13 Aluminium clad timber windows/doors
- W14 Aluminium clad timber windows/doors
- W15 Aluminium clad timber windows/doors
- W16 Aluminium clad timber windows/doors
- W17 Aluminium clad timber windows/doors
- W18 Aluminium clad timber windows/doors
- W19 Aluminium clad timber windows/doors
- W20 Aluminium clad timber windows/doors
- W21 Aluminium clad timber windows/doors
- W22 Aluminium clad timber windows/doors
- W23 Aluminium clad timber windows/doors
- W24 Aluminium clad timber windows/doors
- W25 Aluminium clad timber windows/doors
- W26 Aluminium clad timber windows/doors
- W27 Aluminium clad timber windows/doors
- W28 Aluminium clad timber windows/doors
- W29 Aluminium clad timber windows/doors
- W30 Aluminium clad timber windows/doors
- W31 Aluminium clad timber windows/doors
- W32 Aluminium clad timber windows/doors
- W33 Aluminium clad timber windows/doors
- W34 Aluminium clad timber windows/doors
- W35 Aluminium clad timber windows/doors
- W36 Aluminium clad timber windows/doors
- W37 Aluminium clad timber windows/doors
- W38 Aluminium clad timber windows/doors
- W39 Aluminium clad timber windows/doors
- W40 Aluminium clad timber windows/doors
- W41 Aluminium clad timber windows/doors
- W42 Aluminium clad timber windows/doors
- W43 Aluminium clad timber windows/doors
- W44 Aluminium clad timber windows/doors
- W45 Aluminium clad timber windows/doors
- W46 Aluminium clad timber windows/doors
- W47 Aluminium clad timber windows/doors
- W48 Aluminium clad timber windows/doors
- W49 Aluminium clad timber windows/doors
- W50 Aluminium clad timber windows/doors
- W51 Aluminium clad timber windows/doors
- W52 Aluminium clad timber windows/doors
- W53 Aluminium clad timber windows/doors
- W54 Aluminium clad timber windows/doors
- W55 Aluminium clad timber windows/doors
- W56 Aluminium clad timber windows/doors
- W57 Aluminium clad timber windows/doors
- W58 Aluminium clad timber windows/doors
- W59 Aluminium clad timber windows/doors
- W60 Aluminium clad timber windows/doors
- W61 Aluminium clad timber windows/doors
- W62 Aluminium clad timber windows/doors
- W63 Aluminium clad timber windows/doors
- W64 Aluminium clad timber windows/doors
- W65 Aluminium clad timber windows/doors
- W66 Aluminium clad timber windows/doors
- W67 Aluminium clad timber windows/doors
- W68 Aluminium clad timber windows/doors
- W69 Aluminium clad timber windows/doors
- W70 Aluminium clad timber windows/doors
- W71 Aluminium clad timber windows/doors
- W72 Aluminium clad timber windows/doors
- W73 Aluminium clad timber windows/doors
- W74 Aluminium clad timber windows/doors
- W75 Aluminium clad timber windows/doors
- W76 Aluminium clad timber windows/doors
- W77 Aluminium clad timber windows/doors
- W78 Aluminium clad timber windows/doors
- W79 Aluminium clad timber windows/doors
- W80 Aluminium clad timber windows/doors
- W81 Aluminium clad timber windows/doors
- W82 Aluminium clad timber windows/doors
- W83 Aluminium clad timber windows/doors
- W84 Aluminium clad timber windows/doors
- W85 Aluminium clad timber windows/doors
- W86 Aluminium clad timber windows/doors
- W87 Aluminium clad timber windows/doors
- W88 Aluminium clad timber windows/doors
- W89 Aluminium clad timber windows/doors
- W90 Aluminium clad timber windows/doors
- W91 Aluminium clad timber windows/doors
- W92 Aluminium clad timber windows/doors
- W93 Aluminium clad timber windows/doors
- W94 Aluminium clad timber windows/doors
- W95 Aluminium clad timber windows/doors
- W96 Aluminium clad timber windows/doors
- W97 Aluminium clad timber windows/doors
- W98 Aluminium clad timber windows/doors
- W99 Aluminium clad timber windows/doors
- W100 Aluminium clad timber windows/doors

NOTE: Some items are available in 1:100 drawings for  
 the sake of clarity.

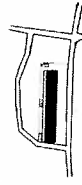
Formal Architects

The Royal Stables  
 41 Wyndham Street  
 London W1 7SS

T 020 7251 0791  
 F 020 7251 6204

formalarchitects.co.uk

Key plan



Project: Riverside House  
 for

Client: Countryside Properties  
 and  
 Harlow in History  
 Housing Association

Drawing Title: East Elevation 01

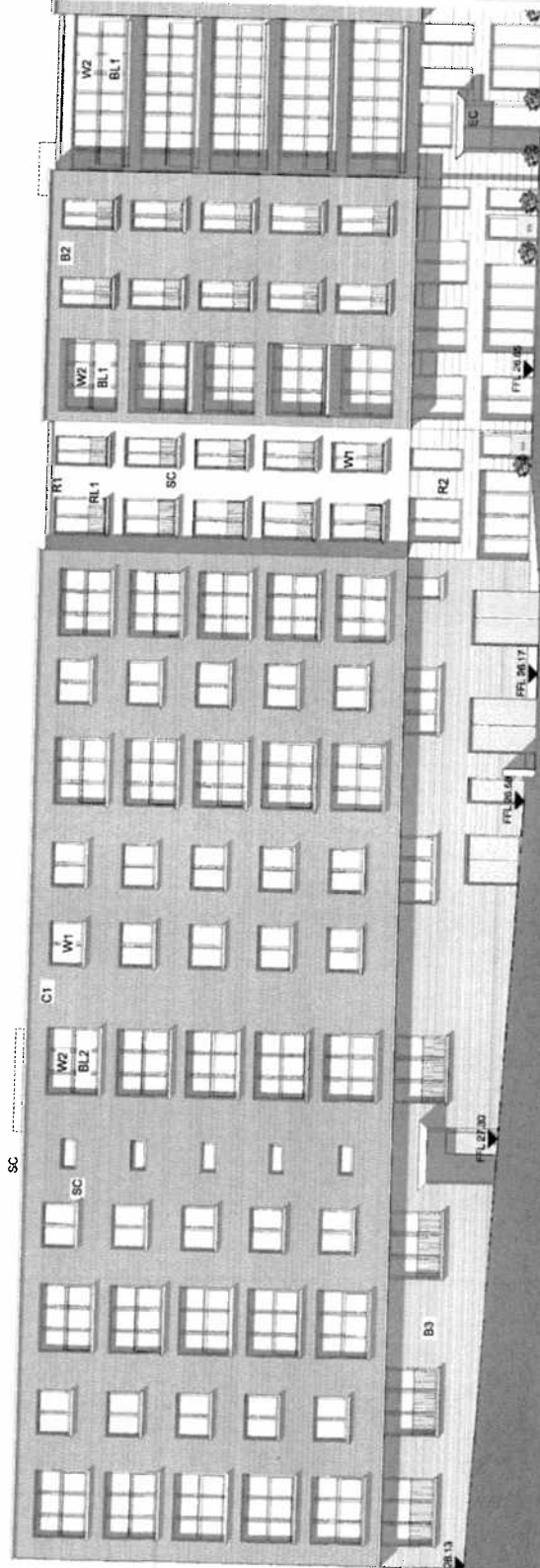
Date: 14.03.06

Drawn by:

Checked by:

Scale: 1:100 (1:400 @ A1)

Drawing No: 5943-D3503 Rev 00

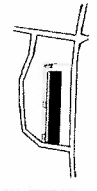


Do not use the drawing. Contact the author of drawings for the. Notify without immediately of any amendments.

- Material Schedule**
- B1 Mail brick
  - B2 Shown engineering brick
  - B3 Multi-bolt wall, min 450 x 100
  - R1 White render
  - R2 Fluorescent white plaster
  - C1 Stone cladding
  - BL1 Glass screened balcony with grey steel section and white aluminium frame. The adjacent parapet with white render.
  - BL2 Providing coloured glass screen balcony with grey steel section with.
  - BL3 Providing coloured glass screen balcony with grey steel section with.
  - SC Storeys all in brick
  - RL1 Black painted steel rail
  - RL2 Black painted steel rail across bridges
  - W1 Aluminium clad timber window/doors
  - W2 Timber glazing with grey steel frame
  - W3 Aluminium glazing
  - EC Mass entrance canopy, painted white
- All windows and doors to be manufacturer's standard and left.
- NOTE:** Some items are marked on 1:100 drawings for the sake of clarity.

**Formal Architects**

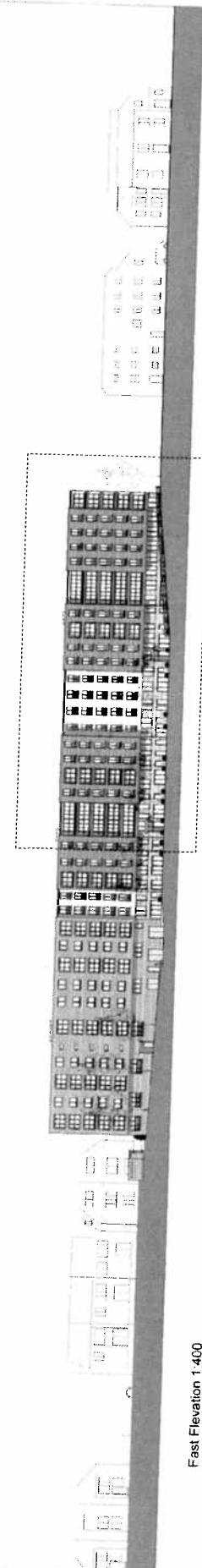
The Royal Society  
41 White Court  
London N1 7SS  
T 020 7261 0781  
F 020 7261 4204  
formalarchitects.co.uk



Project: Subsoch House  
Client: Courtyards Properties  
Harlow in History  
Housing Association  
Drawing No: East Elevation 02  
Prepared: 14.03.06  
Date: 14.03.06  
Checked By: 1.10071.4000A1  
Sheet: 5943-D3504 Rev. 00



East Elevation 1:100 (North end)



East Elevation 1:400

Do not state the client's name. Contractors to confirm all dimensions and materials with the client. All dimensions are to the face of the building unless otherwise stated.

0011.03.06 Permitted Use

**Material Schedule**

- B1 Multi-bolt
- B2 Brown engineering brick
- B3 M25 concrete, min. 20mm aggregate
- F1 White plaster
- F2 Concrete sole course
- C1 Glass cladding
- RL1 Glass reinforced balcony with grey steel section and aluminium handrails (see separate material schedule)
- RL2 Precast concrete glass to the balcony with grey steel section trim
- AL1 Aluminium window frame painted and powder coated
- AL2 Aluminium window frame painted and powder coated
- AL3 Aluminium window frame painted and powder coated
- AL4 Aluminium window frame painted and powder coated
- AL5 Aluminium window frame painted and powder coated
- AL6 Aluminium window frame painted and powder coated
- AL7 Aluminium window frame painted and powder coated
- AL8 Aluminium window frame painted and powder coated
- AL9 Aluminium window frame painted and powder coated
- AL10 Aluminium window frame painted and powder coated
- AL11 Aluminium window frame painted and powder coated
- AL12 Aluminium window frame painted and powder coated
- AL13 Aluminium window frame painted and powder coated
- AL14 Aluminium window frame painted and powder coated
- AL15 Aluminium window frame painted and powder coated
- AL16 Aluminium window frame painted and powder coated
- AL17 Aluminium window frame painted and powder coated
- AL18 Aluminium window frame painted and powder coated
- AL19 Aluminium window frame painted and powder coated
- AL20 Aluminium window frame painted and powder coated
- AL21 Aluminium window frame painted and powder coated
- AL22 Aluminium window frame painted and powder coated
- AL23 Aluminium window frame painted and powder coated
- AL24 Aluminium window frame painted and powder coated
- AL25 Aluminium window frame painted and powder coated
- AL26 Aluminium window frame painted and powder coated
- AL27 Aluminium window frame painted and powder coated
- AL28 Aluminium window frame painted and powder coated
- AL29 Aluminium window frame painted and powder coated
- AL30 Aluminium window frame painted and powder coated
- AL31 Aluminium window frame painted and powder coated
- AL32 Aluminium window frame painted and powder coated
- AL33 Aluminium window frame painted and powder coated
- AL34 Aluminium window frame painted and powder coated
- AL35 Aluminium window frame painted and powder coated
- AL36 Aluminium window frame painted and powder coated
- AL37 Aluminium window frame painted and powder coated
- AL38 Aluminium window frame painted and powder coated
- AL39 Aluminium window frame painted and powder coated
- AL40 Aluminium window frame painted and powder coated
- AL41 Aluminium window frame painted and powder coated
- AL42 Aluminium window frame painted and powder coated
- AL43 Aluminium window frame painted and powder coated
- AL44 Aluminium window frame painted and powder coated
- AL45 Aluminium window frame painted and powder coated
- AL46 Aluminium window frame painted and powder coated
- AL47 Aluminium window frame painted and powder coated
- AL48 Aluminium window frame painted and powder coated
- AL49 Aluminium window frame painted and powder coated
- AL50 Aluminium window frame painted and powder coated
- AL51 Aluminium window frame painted and powder coated
- AL52 Aluminium window frame painted and powder coated
- AL53 Aluminium window frame painted and powder coated
- AL54 Aluminium window frame painted and powder coated
- AL55 Aluminium window frame painted and powder coated
- AL56 Aluminium window frame painted and powder coated
- AL57 Aluminium window frame painted and powder coated
- AL58 Aluminium window frame painted and powder coated
- AL59 Aluminium window frame painted and powder coated
- AL60 Aluminium window frame painted and powder coated
- AL61 Aluminium window frame painted and powder coated
- AL62 Aluminium window frame painted and powder coated
- AL63 Aluminium window frame painted and powder coated
- AL64 Aluminium window frame painted and powder coated
- AL65 Aluminium window frame painted and powder coated
- AL66 Aluminium window frame painted and powder coated
- AL67 Aluminium window frame painted and powder coated
- AL68 Aluminium window frame painted and powder coated
- AL69 Aluminium window frame painted and powder coated
- AL70 Aluminium window frame painted and powder coated
- AL71 Aluminium window frame painted and powder coated
- AL72 Aluminium window frame painted and powder coated
- AL73 Aluminium window frame painted and powder coated
- AL74 Aluminium window frame painted and powder coated
- AL75 Aluminium window frame painted and powder coated
- AL76 Aluminium window frame painted and powder coated
- AL77 Aluminium window frame painted and powder coated
- AL78 Aluminium window frame painted and powder coated
- AL79 Aluminium window frame painted and powder coated
- AL80 Aluminium window frame painted and powder coated
- AL81 Aluminium window frame painted and powder coated
- AL82 Aluminium window frame painted and powder coated
- AL83 Aluminium window frame painted and powder coated
- AL84 Aluminium window frame painted and powder coated
- AL85 Aluminium window frame painted and powder coated
- AL86 Aluminium window frame painted and powder coated
- AL87 Aluminium window frame painted and powder coated
- AL88 Aluminium window frame painted and powder coated
- AL89 Aluminium window frame painted and powder coated
- AL90 Aluminium window frame painted and powder coated
- AL91 Aluminium window frame painted and powder coated
- AL92 Aluminium window frame painted and powder coated
- AL93 Aluminium window frame painted and powder coated
- AL94 Aluminium window frame painted and powder coated
- AL95 Aluminium window frame painted and powder coated
- AL96 Aluminium window frame painted and powder coated
- AL97 Aluminium window frame painted and powder coated
- AL98 Aluminium window frame painted and powder coated
- AL99 Aluminium window frame painted and powder coated
- AL100 Aluminium window frame painted and powder coated

AL101 Aluminium window frame painted and powder coated

AL102 Aluminium window frame painted and powder coated

AL103 Aluminium window frame painted and powder coated

AL104 Aluminium window frame painted and powder coated

AL105 Aluminium window frame painted and powder coated

AL106 Aluminium window frame painted and powder coated

AL107 Aluminium window frame painted and powder coated

AL108 Aluminium window frame painted and powder coated

AL109 Aluminium window frame painted and powder coated

AL110 Aluminium window frame painted and powder coated

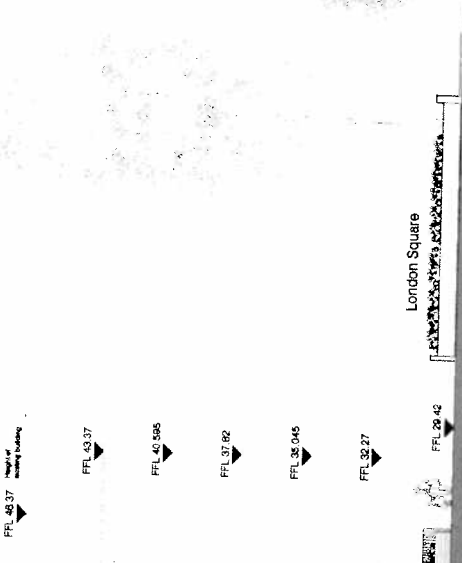
AL111 Aluminium window frame painted and powder coated

AL112 Aluminium window frame painted and powder coated

AL113 Aluminium window frame painted and powder coated

AL114 Aluminium window frame painted and powder coated

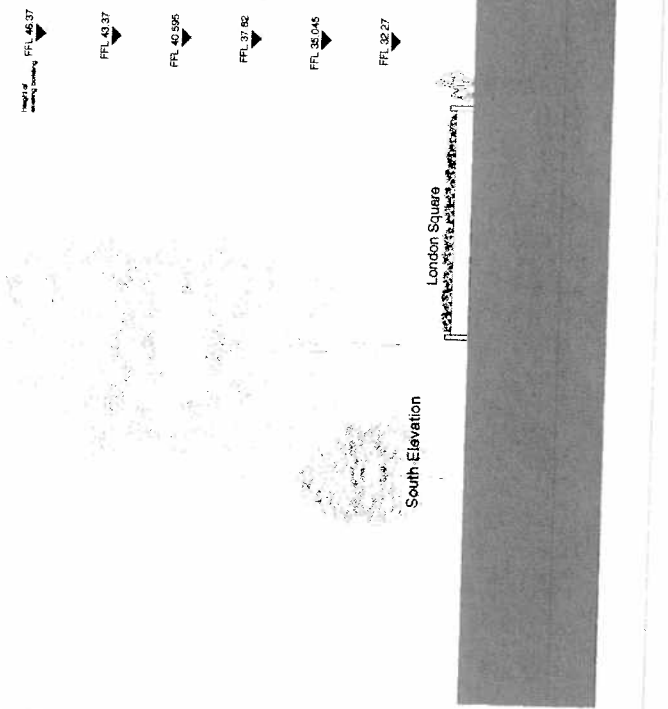
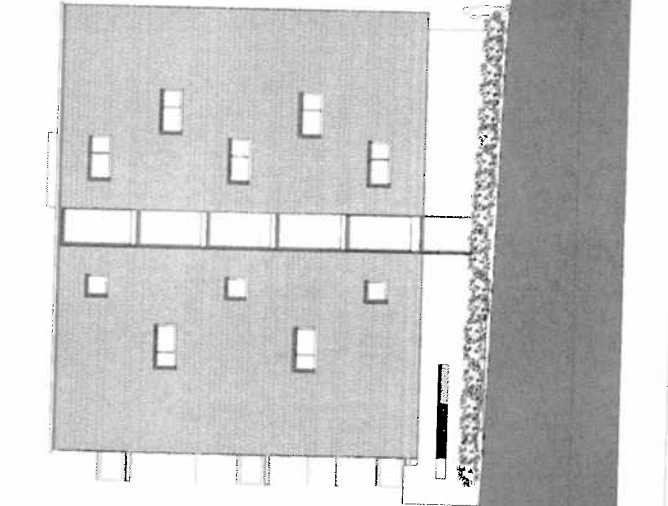
AL115 Aluminium window frame painted and powder coated



North Elevation



South Elevation



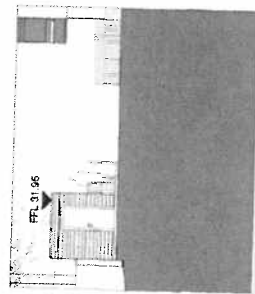
London Square

**Formations Architects**  
 The Park Studios  
 41 Wimpole Road  
 London N1 7SC  
 T 020 7251 0781  
 F 020 7251 0204  
 formations@formations.co.uk

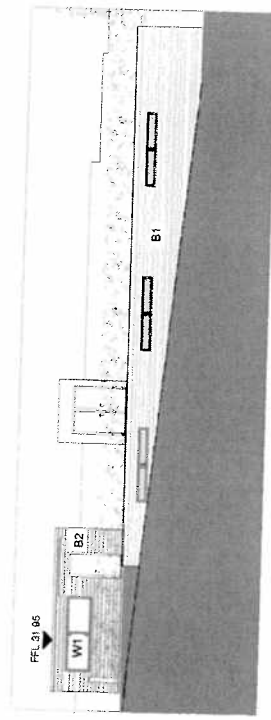
Project: Burslem House for Countrywide Properties and Harlowe in Harlow Housing Association  
 Drawn by: [Name]  
 Date: 14.03.06  
 Scale: 1:200 @ A1  
 Drawing no: 5943-D3605 Rev 00

Do not scale the drawings. Consult a contract document for the full extent of the drawings.  
 Date: 02/11/2008 Project: Parking bars

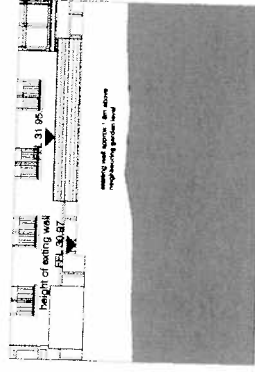
**North Elevation**



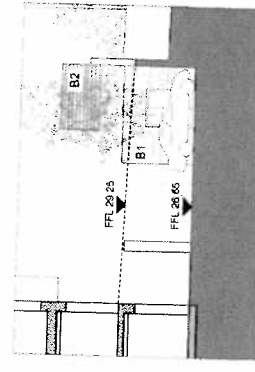
**West Elevation**



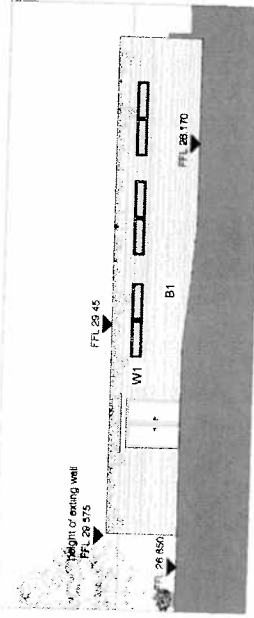
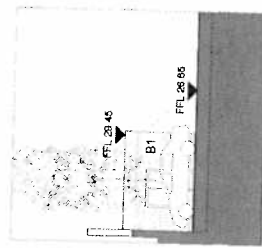
**East Elevation**



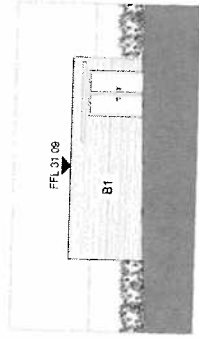
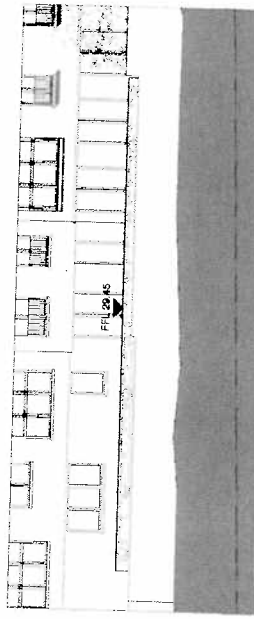
**South Elevation**



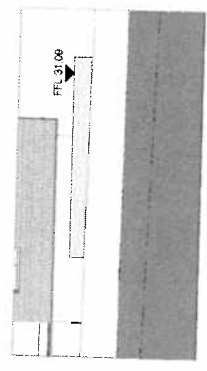
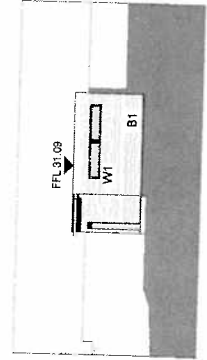
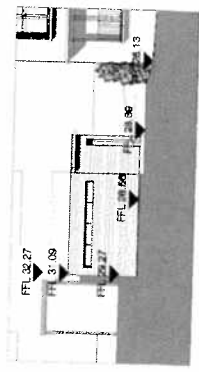
**Block 1) Concierge + Refuse**



**Block 2) Cycle store + central refuse store**

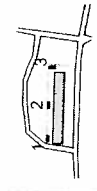


**Block 3) HinH refuse**



- Material Schedule**
- B1 Multi-task
  - B2 Screen, impervious brick
  - B3 Multi-task with mix of B1 and B2
  - B4 White render
  - B5 Reinforced concrete
  - C1 Slate cladding
  - C2 Glass screen factory with grey steel section and frame, recessed into adjacent facade with grey steel section with
  - C3 Glass screen factory with grey steel section and frame, recessed into adjacent facade with grey steel section with
  - C4 Reinforced concrete screen factory with steel and grey
  - C5 Reinforced concrete screen factory with steel and grey
  - C6 Reinforced concrete screen factory with steel and grey
  - C7 Reinforced concrete screen factory with steel and grey
  - C8 Reinforced concrete screen factory with steel and grey
  - C9 Reinforced concrete screen factory with steel and grey
  - C10 Reinforced concrete screen factory with steel and grey
  - C11 Reinforced concrete screen factory with steel and grey
  - C12 Reinforced concrete screen factory with steel and grey
  - C13 Reinforced concrete screen factory with steel and grey
  - C14 Reinforced concrete screen factory with steel and grey
  - C15 Reinforced concrete screen factory with steel and grey
  - C16 Reinforced concrete screen factory with steel and grey
  - C17 Reinforced concrete screen factory with steel and grey
  - C18 Reinforced concrete screen factory with steel and grey
  - C19 Reinforced concrete screen factory with steel and grey
  - C20 Reinforced concrete screen factory with steel and grey
  - C21 Reinforced concrete screen factory with steel and grey
  - C22 Reinforced concrete screen factory with steel and grey
  - C23 Reinforced concrete screen factory with steel and grey
  - C24 Reinforced concrete screen factory with steel and grey
  - C25 Reinforced concrete screen factory with steel and grey
  - C26 Reinforced concrete screen factory with steel and grey
  - C27 Reinforced concrete screen factory with steel and grey
  - C28 Reinforced concrete screen factory with steel and grey
  - C29 Reinforced concrete screen factory with steel and grey
  - C30 Reinforced concrete screen factory with steel and grey
  - C31 Reinforced concrete screen factory with steel and grey
  - C32 Reinforced concrete screen factory with steel and grey
  - C33 Reinforced concrete screen factory with steel and grey
  - C34 Reinforced concrete screen factory with steel and grey
  - C35 Reinforced concrete screen factory with steel and grey
  - C36 Reinforced concrete screen factory with steel and grey
  - C37 Reinforced concrete screen factory with steel and grey
  - C38 Reinforced concrete screen factory with steel and grey
  - C39 Reinforced concrete screen factory with steel and grey
  - C40 Reinforced concrete screen factory with steel and grey
  - C41 Reinforced concrete screen factory with steel and grey
  - C42 Reinforced concrete screen factory with steel and grey
  - C43 Reinforced concrete screen factory with steel and grey
  - C44 Reinforced concrete screen factory with steel and grey
  - C45 Reinforced concrete screen factory with steel and grey
  - C46 Reinforced concrete screen factory with steel and grey
  - C47 Reinforced concrete screen factory with steel and grey
  - C48 Reinforced concrete screen factory with steel and grey
  - C49 Reinforced concrete screen factory with steel and grey
  - C50 Reinforced concrete screen factory with steel and grey
  - C51 Reinforced concrete screen factory with steel and grey
  - C52 Reinforced concrete screen factory with steel and grey
  - C53 Reinforced concrete screen factory with steel and grey
  - C54 Reinforced concrete screen factory with steel and grey
  - C55 Reinforced concrete screen factory with steel and grey
  - C56 Reinforced concrete screen factory with steel and grey
  - C57 Reinforced concrete screen factory with steel and grey
  - C58 Reinforced concrete screen factory with steel and grey
  - C59 Reinforced concrete screen factory with steel and grey
  - C60 Reinforced concrete screen factory with steel and grey
  - C61 Reinforced concrete screen factory with steel and grey
  - C62 Reinforced concrete screen factory with steel and grey
  - C63 Reinforced concrete screen factory with steel and grey
  - C64 Reinforced concrete screen factory with steel and grey
  - C65 Reinforced concrete screen factory with steel and grey
  - C66 Reinforced concrete screen factory with steel and grey
  - C67 Reinforced concrete screen factory with steel and grey
  - C68 Reinforced concrete screen factory with steel and grey
  - C69 Reinforced concrete screen factory with steel and grey
  - C70 Reinforced concrete screen factory with steel and grey
  - C71 Reinforced concrete screen factory with steel and grey
  - C72 Reinforced concrete screen factory with steel and grey
  - C73 Reinforced concrete screen factory with steel and grey
  - C74 Reinforced concrete screen factory with steel and grey
  - C75 Reinforced concrete screen factory with steel and grey
  - C76 Reinforced concrete screen factory with steel and grey
  - C77 Reinforced concrete screen factory with steel and grey
  - C78 Reinforced concrete screen factory with steel and grey
  - C79 Reinforced concrete screen factory with steel and grey
  - C80 Reinforced concrete screen factory with steel and grey
  - C81 Reinforced concrete screen factory with steel and grey
  - C82 Reinforced concrete screen factory with steel and grey
  - C83 Reinforced concrete screen factory with steel and grey
  - C84 Reinforced concrete screen factory with steel and grey
  - C85 Reinforced concrete screen factory with steel and grey
  - C86 Reinforced concrete screen factory with steel and grey
  - C87 Reinforced concrete screen factory with steel and grey
  - C88 Reinforced concrete screen factory with steel and grey
  - C89 Reinforced concrete screen factory with steel and grey
  - C90 Reinforced concrete screen factory with steel and grey
  - C91 Reinforced concrete screen factory with steel and grey
  - C92 Reinforced concrete screen factory with steel and grey
  - C93 Reinforced concrete screen factory with steel and grey
  - C94 Reinforced concrete screen factory with steel and grey
  - C95 Reinforced concrete screen factory with steel and grey
  - C96 Reinforced concrete screen factory with steel and grey
  - C97 Reinforced concrete screen factory with steel and grey
  - C98 Reinforced concrete screen factory with steel and grey
  - C99 Reinforced concrete screen factory with steel and grey
  - C100 Reinforced concrete screen factory with steel and grey

The Royal Studios  
 14-16 Red Road  
 London N17 7GS  
 T 020 7251 0781  
 F 020 7251 9204  
 form@architects.co.uk



Project: Bostanuch House  
 Client: Countywide Properties  
 Harlow in Harlow  
 Housing Association  
 Drawing Title: Ancillary Building Elevations  
 Proposed  
 Date: 14.03.08  
 Drawn by:  
 Checked by:  
 Date: 1.2008  
 Scale: 1:400  
 Drawing No: 5943-D3506 Rev 00





Do not scale the drawing. Complete a colour or black and white print. Do not photocopy or reproduce in any form without the prior written permission of the architect.

Project No: 02 14 03 18 Planning Issue

- Material Schedule**
- B1 Multi-locks
  - B2 Brown engineering bricks
  - B3 Multi-locks work, rns of G1 and G2
  - B4 White render
  - B5 Fluorescent green render
  - C1 Stone cladding

ML1 Glass fronted balcony with 270 degree rotation  
 ML2 Glass fronted balcony with 180 degree rotation  
 ML3 Glass fronted balcony with 90 degree rotation  
 ML4 Glass fronted balcony with 0 degree rotation  
 ML5 Glass fronted balcony with 270 degree rotation  
 ML6 Glass fronted balcony with 180 degree rotation  
 ML7 Glass fronted balcony with 90 degree rotation  
 ML8 Glass fronted balcony with 0 degree rotation

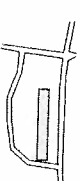
- WC1 Floor slabs with grey tile panels
- WC2 Floor slabs with grey tile panels
- WC3 Floor slabs with grey tile panels
- WC4 Floor slabs with grey tile panels
- WC5 Floor slabs with grey tile panels
- WC6 Floor slabs with grey tile panels
- WC7 Floor slabs with grey tile panels
- WC8 Floor slabs with grey tile panels
- WC9 Floor slabs with grey tile panels
- WC10 Floor slabs with grey tile panels
- WC11 Floor slabs with grey tile panels
- WC12 Floor slabs with grey tile panels
- WC13 Floor slabs with grey tile panels
- WC14 Floor slabs with grey tile panels
- WC15 Floor slabs with grey tile panels
- WC16 Floor slabs with grey tile panels
- WC17 Floor slabs with grey tile panels
- WC18 Floor slabs with grey tile panels
- WC19 Floor slabs with grey tile panels
- WC20 Floor slabs with grey tile panels
- WC21 Floor slabs with grey tile panels
- WC22 Floor slabs with grey tile panels
- WC23 Floor slabs with grey tile panels
- WC24 Floor slabs with grey tile panels
- WC25 Floor slabs with grey tile panels
- WC26 Floor slabs with grey tile panels
- WC27 Floor slabs with grey tile panels
- WC28 Floor slabs with grey tile panels
- WC29 Floor slabs with grey tile panels
- WC30 Floor slabs with grey tile panels
- WC31 Floor slabs with grey tile panels
- WC32 Floor slabs with grey tile panels
- WC33 Floor slabs with grey tile panels
- WC34 Floor slabs with grey tile panels
- WC35 Floor slabs with grey tile panels
- WC36 Floor slabs with grey tile panels
- WC37 Floor slabs with grey tile panels
- WC38 Floor slabs with grey tile panels
- WC39 Floor slabs with grey tile panels
- WC40 Floor slabs with grey tile panels
- WC41 Floor slabs with grey tile panels
- WC42 Floor slabs with grey tile panels
- WC43 Floor slabs with grey tile panels
- WC44 Floor slabs with grey tile panels
- WC45 Floor slabs with grey tile panels
- WC46 Floor slabs with grey tile panels
- WC47 Floor slabs with grey tile panels
- WC48 Floor slabs with grey tile panels
- WC49 Floor slabs with grey tile panels
- WC50 Floor slabs with grey tile panels
- WC51 Floor slabs with grey tile panels
- WC52 Floor slabs with grey tile panels
- WC53 Floor slabs with grey tile panels
- WC54 Floor slabs with grey tile panels
- WC55 Floor slabs with grey tile panels
- WC56 Floor slabs with grey tile panels
- WC57 Floor slabs with grey tile panels
- WC58 Floor slabs with grey tile panels
- WC59 Floor slabs with grey tile panels
- WC60 Floor slabs with grey tile panels
- WC61 Floor slabs with grey tile panels
- WC62 Floor slabs with grey tile panels
- WC63 Floor slabs with grey tile panels
- WC64 Floor slabs with grey tile panels
- WC65 Floor slabs with grey tile panels
- WC66 Floor slabs with grey tile panels
- WC67 Floor slabs with grey tile panels
- WC68 Floor slabs with grey tile panels
- WC69 Floor slabs with grey tile panels
- WC70 Floor slabs with grey tile panels
- WC71 Floor slabs with grey tile panels
- WC72 Floor slabs with grey tile panels
- WC73 Floor slabs with grey tile panels
- WC74 Floor slabs with grey tile panels
- WC75 Floor slabs with grey tile panels
- WC76 Floor slabs with grey tile panels
- WC77 Floor slabs with grey tile panels
- WC78 Floor slabs with grey tile panels
- WC79 Floor slabs with grey tile panels
- WC80 Floor slabs with grey tile panels
- WC81 Floor slabs with grey tile panels
- WC82 Floor slabs with grey tile panels
- WC83 Floor slabs with grey tile panels
- WC84 Floor slabs with grey tile panels
- WC85 Floor slabs with grey tile panels
- WC86 Floor slabs with grey tile panels
- WC87 Floor slabs with grey tile panels
- WC88 Floor slabs with grey tile panels
- WC89 Floor slabs with grey tile panels
- WC90 Floor slabs with grey tile panels
- WC91 Floor slabs with grey tile panels
- WC92 Floor slabs with grey tile panels
- WC93 Floor slabs with grey tile panels
- WC94 Floor slabs with grey tile panels
- WC95 Floor slabs with grey tile panels
- WC96 Floor slabs with grey tile panels
- WC97 Floor slabs with grey tile panels
- WC98 Floor slabs with grey tile panels
- WC99 Floor slabs with grey tile panels
- WC100 Floor slabs with grey tile panels

NOTE: Some items are omitted on 1:100 drawings for the sake of clarity.

**Formalton Architects**

The Rye Studio  
 41 W. ...  
 London N1 7SQ  
 T 020 7251 0791  
 F 020 7251 1604  
 formaltonarchitects.co.uk

File Size



0 10 m

Project: Bucklebury House  
 for  
 Countryside Properties  
 and  
 Harlow in Harlow  
 Housing Association

Client: Harlow in Harlow Housing Association

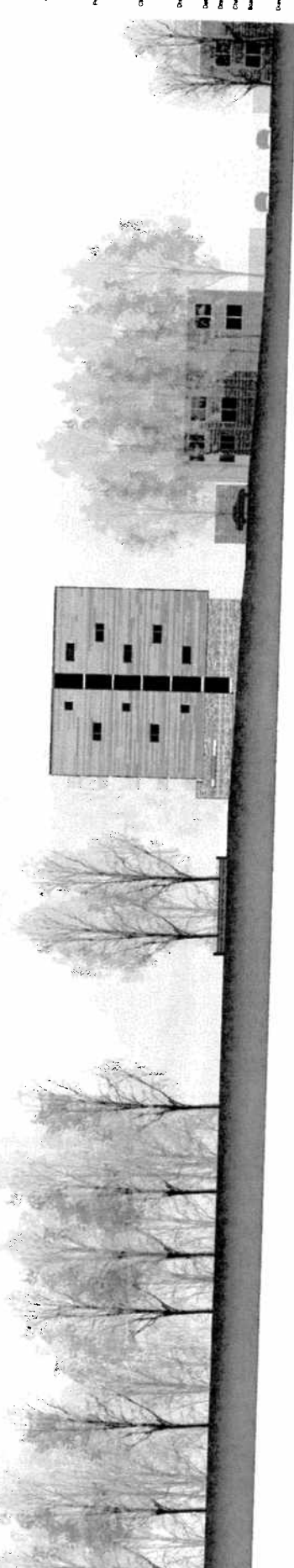
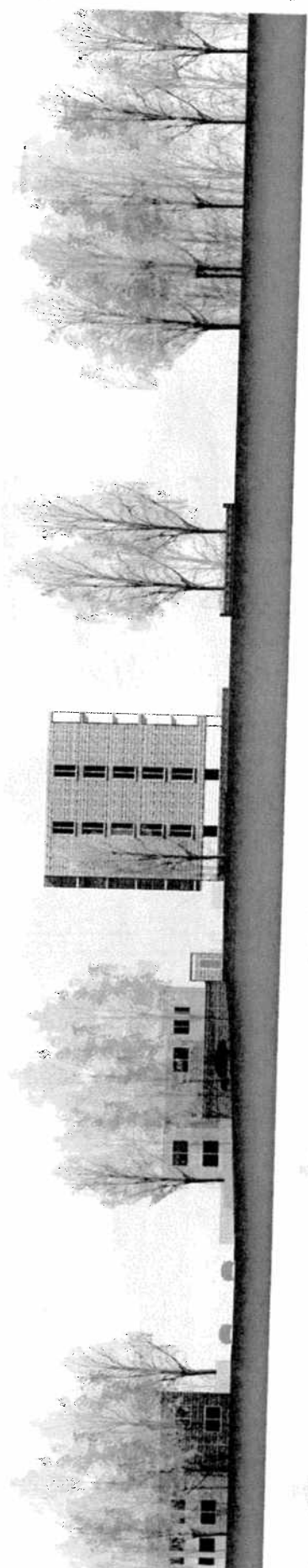
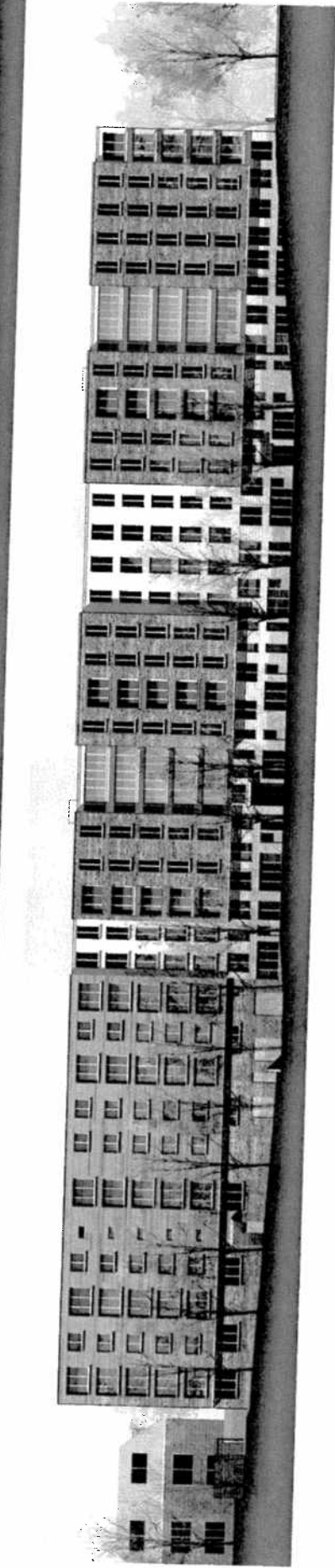
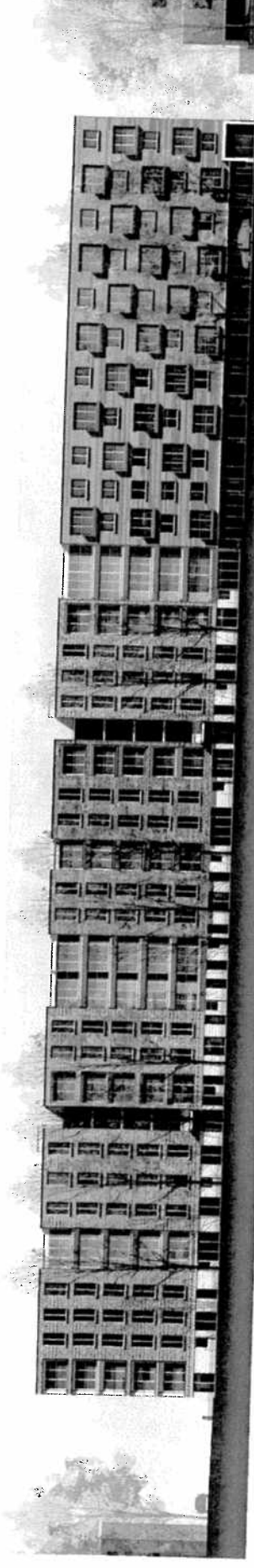
Drawn by: The Colour Elevation  
 Proposed

Date: 14.03.08

Checked by:

Scale: 1:200

Drawing No: 5943-D3601 Rev 00



On the above drawings, Contractors to submit all  
 dimensions and levels to be checked immediately if any  
 discrepancy.  
 17/10/2018 Planning Dept

Formations Architects

The Royal Studios  
 41 Wainlock Road  
 London N17 5SQ  
 T 020 7251 0794  
 F 020 7251 0254  
 formationsarchitects.co.uk

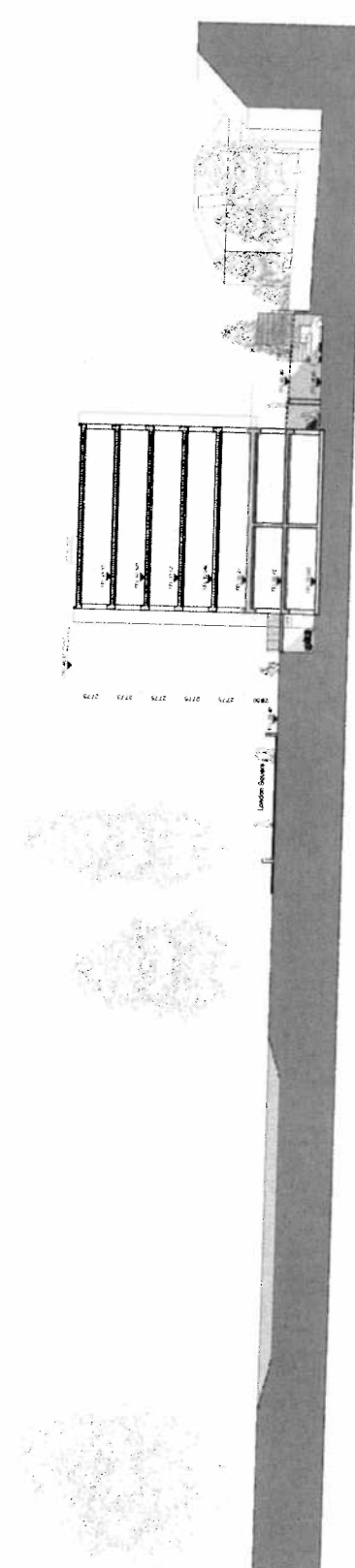
Key plan



Project: Buccleuch House  
 for  
 Countryside Properties  
 and  
 Date: Handover in Fleckney  
 Housing Association  
 Drawing No: Sections A & B  
 Proposed  
 Date: 11/01/08  
 Drawn by:  
 Checked by:  
 Date: 1.2008@A1 1.4008@A3  
 Drawing No: 5943-D3701 Rev. 00



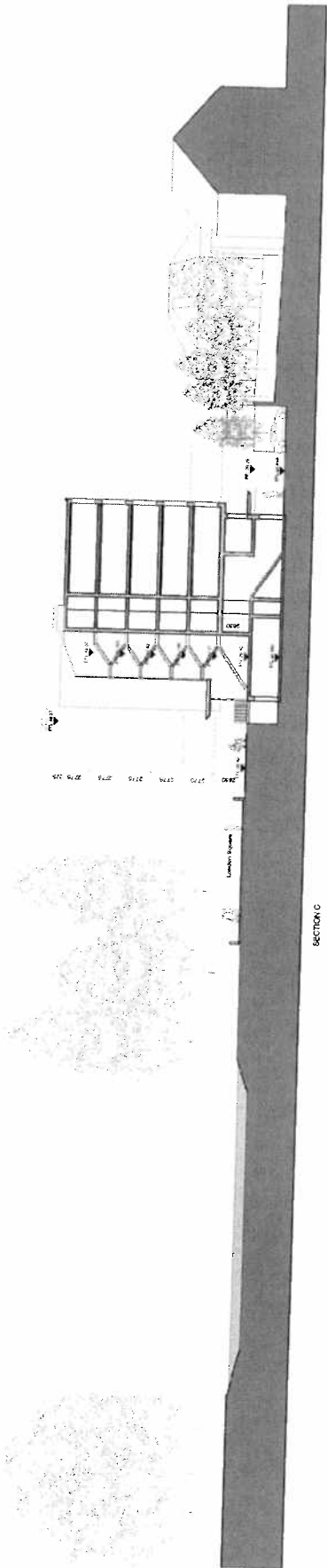
SECTION A



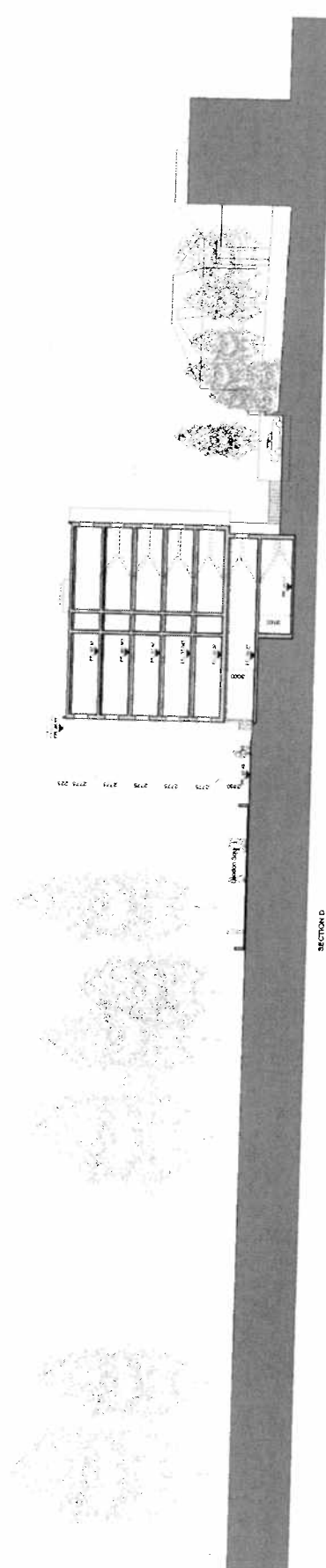
SECTION B

Do not scale the drawing. Consult the architect for details of dimensions and the likely position of any elements.

0014/03/08 Planning Issue



SECTION C



SECTION D

Formal Architects

The Pine Studios  
41 Wood Lane  
London N1 7SD  
T 020 7251 0781  
F 020 7251 9504  
formalarchitects.co.uk

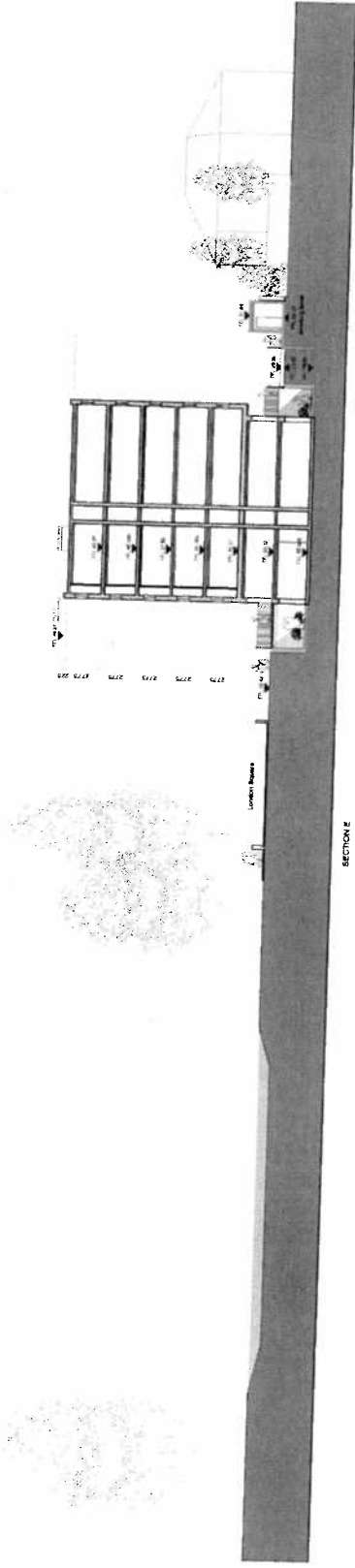
Key plan



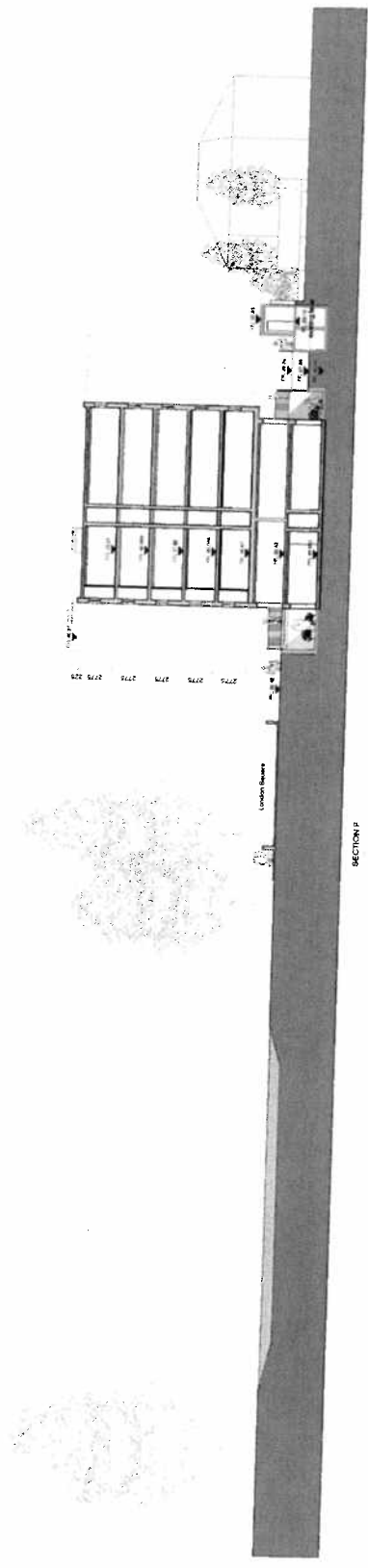
0 10 m

Name	Booth House for Countyside Properties and Harrow in Hackney Housing Association
Client	Countyside Properties and Harrow in Hackney Housing Association
Drawing No	Sections C & D Proposed
Date	14.03.08
Drawn by	
Checked by	
Scale	1:200 @ A1 1:400 @ A3
Drawing No	5943-D3702 Rev 00

Do not scale the drawing. Complete to include all  
 dimensions on fully finished drawings of any  
 description.  
 Approved  
 08/11/06/06 Planning Dept



SECTION E

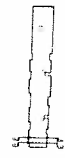


SECTION F

form360 architects

The Pine Studios  
 41 Wood Lane  
 London N1 7SG  
 T 020 7251 0781  
 F 020 7251 1604  
 form360architects.co.uk

09/06/06



Project: Suddoch House  
 for  
 Countryside Properties  
 and  
 Harrow in Hackney  
 Housing Association  
 Drawing No: Sections E & F  
 Date: 11/06/06  
 Drawn by:  
 Checked by:  
 Scale: 1:200 @ A1 1:400 @ A3  
 Drawing No: 5948-03703 Rev 00



Do not make any alterations. Contractors to verify all dimensions and levels on site before commencing any work.  
Revision:  
08.11.03.08 Printed Date

Fornalton Architects

The Plaza Studios  
41 Wood Lane  
London N1 7SG  
T 020 7251 0781  
F 020 7251 9504  
formal@fornaltonarchitects.co.uk

Plot 20/01



Project: Broadchurch House  
for  
Countrywide Properties  
and  
Harrower in Harrower  
Housing Association

Drawn: Site Location Plan:  
Proposed

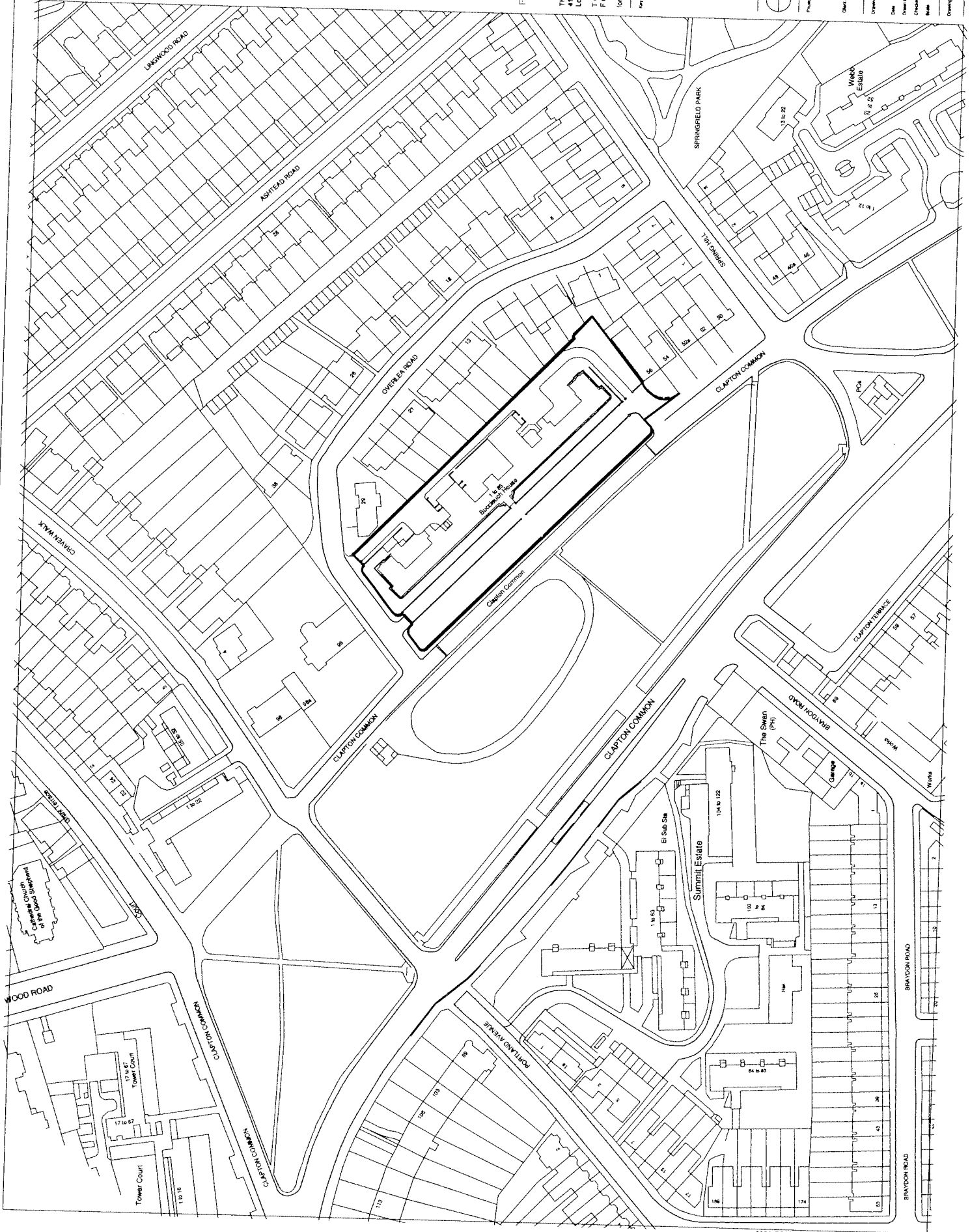
Date: 14.03.08

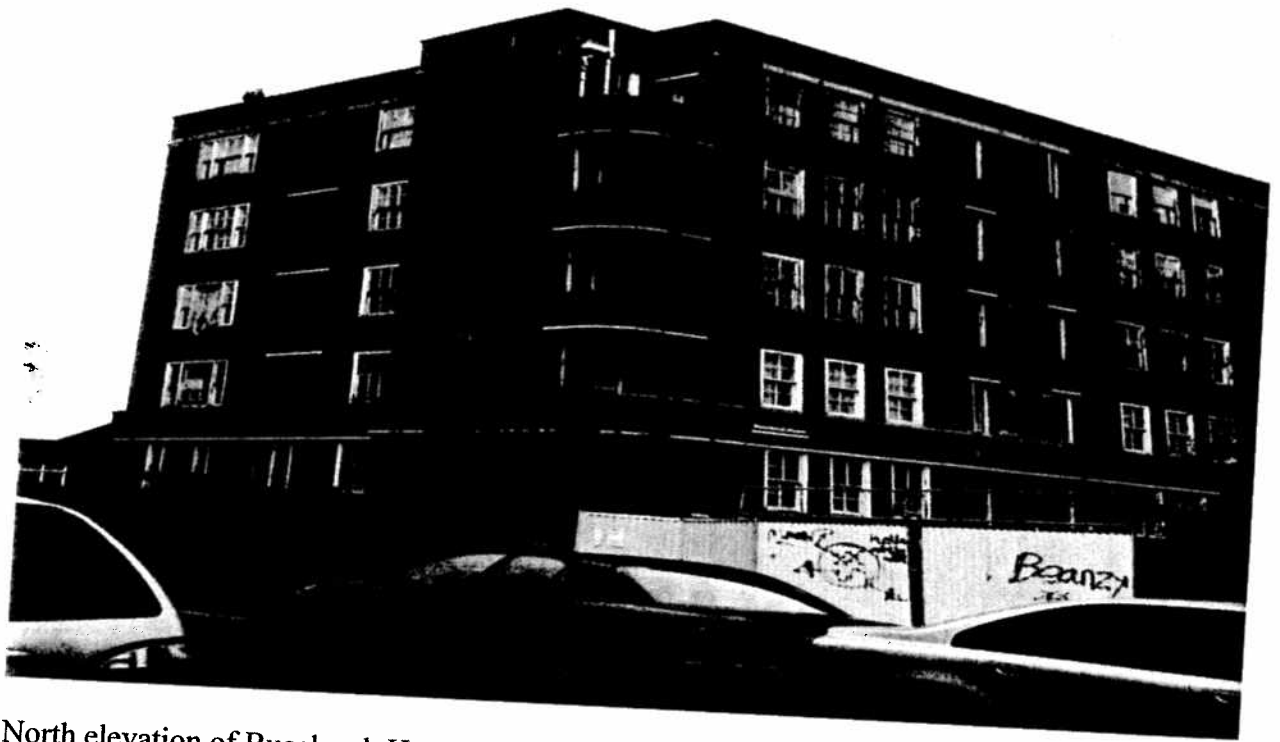
Drawn by: RKM

Checked by: JIM

Scale: 1:5000 A1 1:1200 A3

Drawing No: 5943-D2100 Rev 00





North elevation of Buccleuch House from Clapton Common



Buccleuch House, west elevation with London Square and Clapton Common Pond in foreground.





London Square and Buccleuch House



Buccleuch House with 56 Overlea House neighbouring.



South elevation Buccleuch House



Rear of Buccleuch House